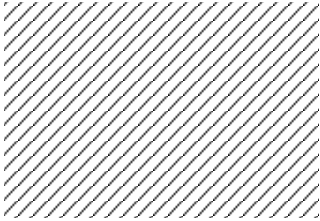


Kurna_Tuhala ÜK

VE_EA

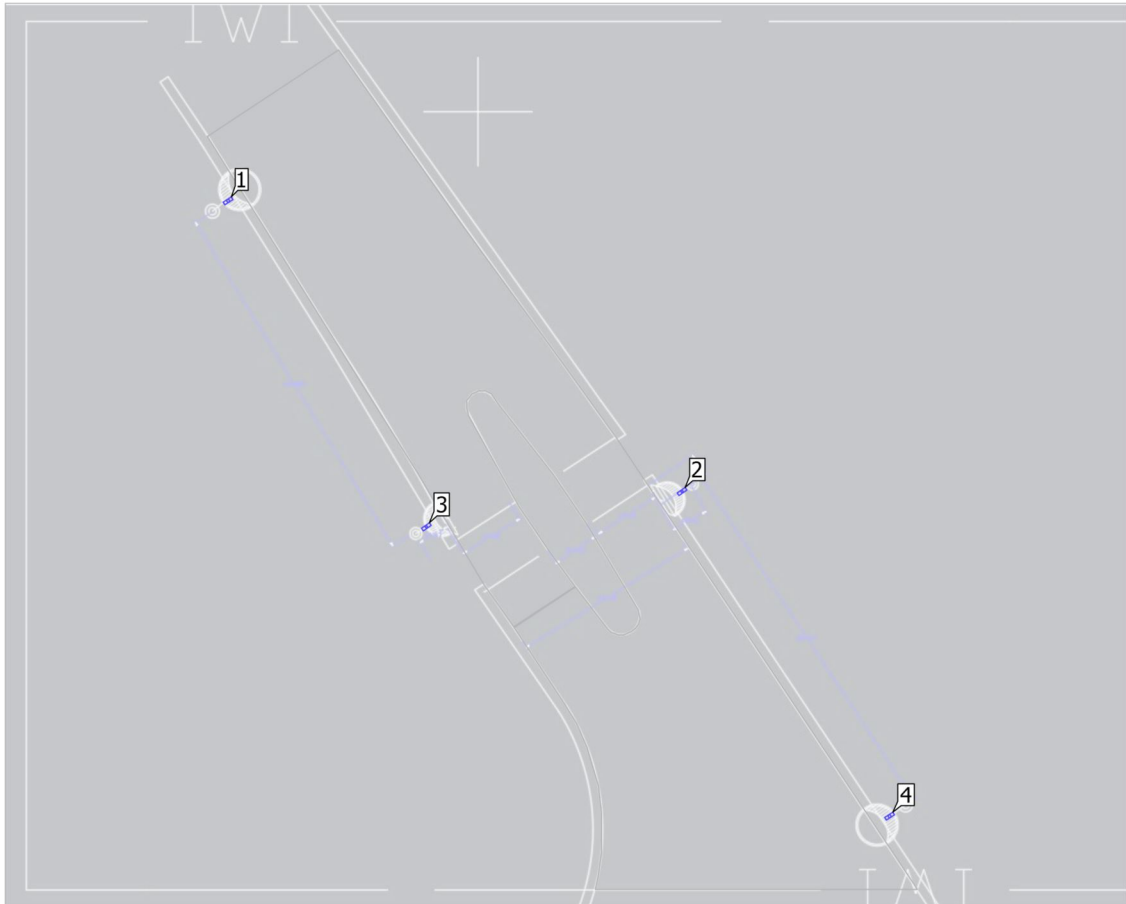
Kontaktid



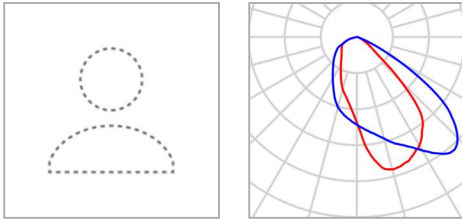
VE_EA

Territorium 1

Valgustite asendiskeem



Territorium 1

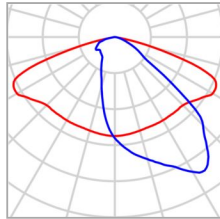
Valgustite asendiskeem

| | | | |
|--------------|------------------------------------|-----------|---------|
| Artikli nr. | Micro Martin 40 W 16 LEDs | P | 40.0 W |
| Artikli nimi | MRUE 040 757 L11 AA016_Bin-M_TH | ΦValgusti | 5835 lm |
| Varustatus | 1x 16 LEDs bin M | | |

Üksikud valgustid

| X | Y | Paigalduskõrgus | Valgusti |
|----------|----------|-----------------|----------|
| 36.351 m | 22.281 m | 6.000 m | 2 |
| 22.616 m | 20.384 m | 6.000 m | 3 |

Territoorium 1

Valgustite asendiskeem

| | | | |
|--------------|--------------------------------------|-----------|---------|
| Tootja | Vizulo | P | 40.0 W |
| Artikli nr. | 6000027580 MRUE 040 730 L01 AA016 | ΦValgusti | 5693 lm |
| Artikli nimi | Micro Martin 40 W 16 LED | | |
| Varustatus | 1x 16 LED MOD AA | | |

Üksikud valgustid

| X | Y | Paigalduskõrgus | Valgusti |
|----------|----------|-----------------|----------|
| 11.962 m | 37.889 m | 8.000 m | 1 |
| 47.506 m | 4.845 m | 8.000 m | 4 |

Territoorium 1

Valgustite loend Φ_{kokku}

23056 lm

 P_{kokku}

160.0 W

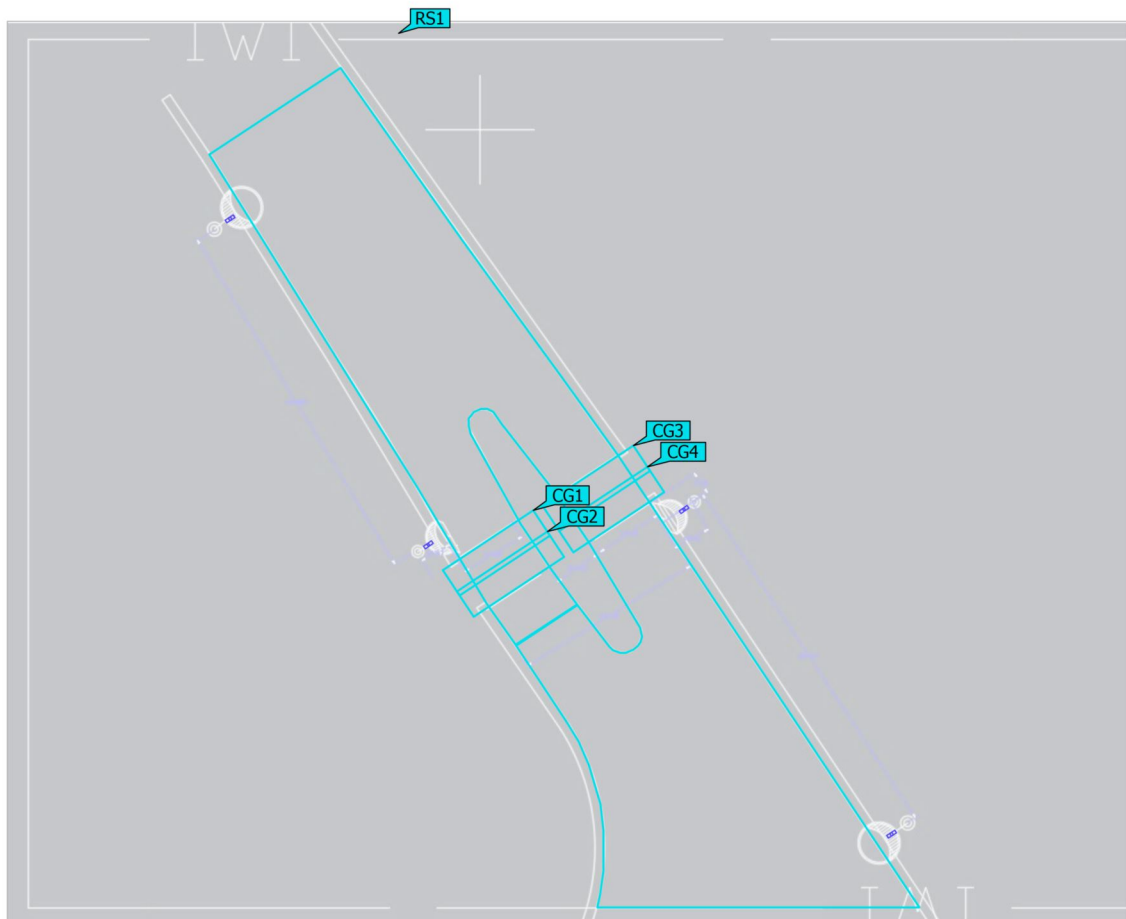
Valgusviljakus

144.1 lm/W

| tk | Tootja | Artikli nr. | Artikli nimi | P | Φ | Valgusviljakus |
|----|--------|---|---------------------------------|--------|---------|----------------|
| 2 | | Micro Martin 40 W 16 LEDs | MRUE 040 757 L11 AA016_Bin-M_TH | 40.0 W | 5835 lm | 145.9 lm/W |
| 2 | Vizulo | 6000027 580 MRUE 040 730 L01 AA016 | Micro Martin 40 W 16 LED | 40.0 W | 5693 lm | 142.3 lm/W |

Territoorium 1 (Valgussteen 1)

Arvutuse objektid



Territoorium 1 (Valgustseen 1)

Arvutuse objektid

Tulemusobjektide pinnad

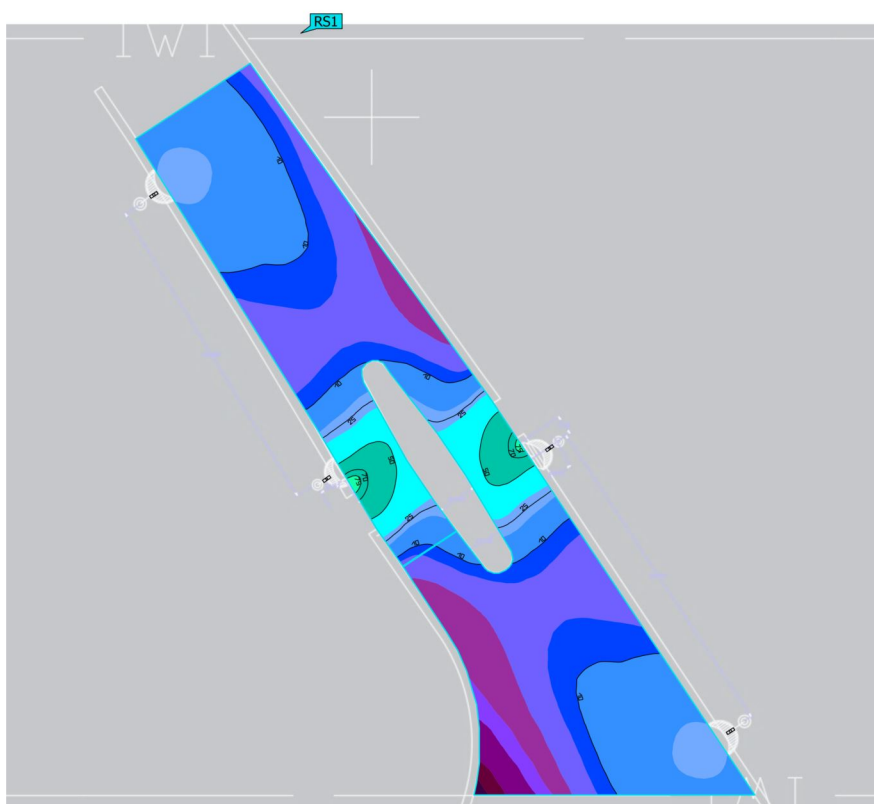
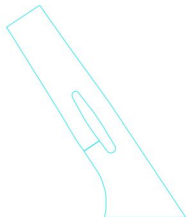
| Atribuudid | Ø | min | max | U _o (g ₁) | g ₂ | Indeks |
|--|------------------------|-------------------------|------------------------|----------------------------------|----------------|--------|
| Tulemusobjekti pinnad 1 Ristine valgustustihedus (adaptiivne) Kõrgus: -0.000 m | 14.4 lx | 0.65 lx | 79.2 lx | 0.045 | 0.008 | RS1 |
| Tulemusobjekti pinnad 1 Heledus Kõrgus: -0.000 m | 0.92 cd/m ² | 0.042 cd/m ² | 5.04 cd/m ² | 0.046 | 0.008 | RS1 |

Arvutuspinnad

| Atribuudid | Ē | E _{min} | E _{max} | U _o (g ₁) | g ₂ | Indeks |
|---|---------|------------------|------------------|----------------------------------|----------------|--------|
| ÜK1 nurgapunktid Vertikaalne valgustustihedus Pöörlemine: 125.0°, Kõrgus: 1.000 m | 25.3 lx | 7.28 lx | 43.1 lx | 0.29 | 0.17 | CG1 |
| ÜK1 kesktelg Vertikaalne valgustustihedus Pöörlemine: 125.0°, Kõrgus: 1.000 m | 34.3 lx | 14.0 lx | 47.3 lx | 0.41 | 0.30 | CG2 |
| ÜK2 nurgapunktid Vertikaalne valgustustihedus Pöörlemine: -55.0°, Kõrgus: 1.000 m | 24.1 lx | 6.74 lx | 45.5 lx | 0.28 | 0.15 | CG3 |
| ÜK2 kesktelg Vertikaalne valgustustihedus Pöörlemine: -55.0°, Kõrgus: 1.000 m | 32.2 lx | 11.3 lx | 47.0 lx | 0.35 | 0.24 | CG4 |

Kasutamispüü: DIALuxi eelsäte (5.1.4 Standard (liikluspind väljas))

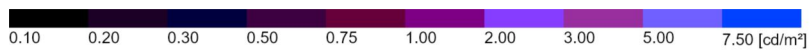
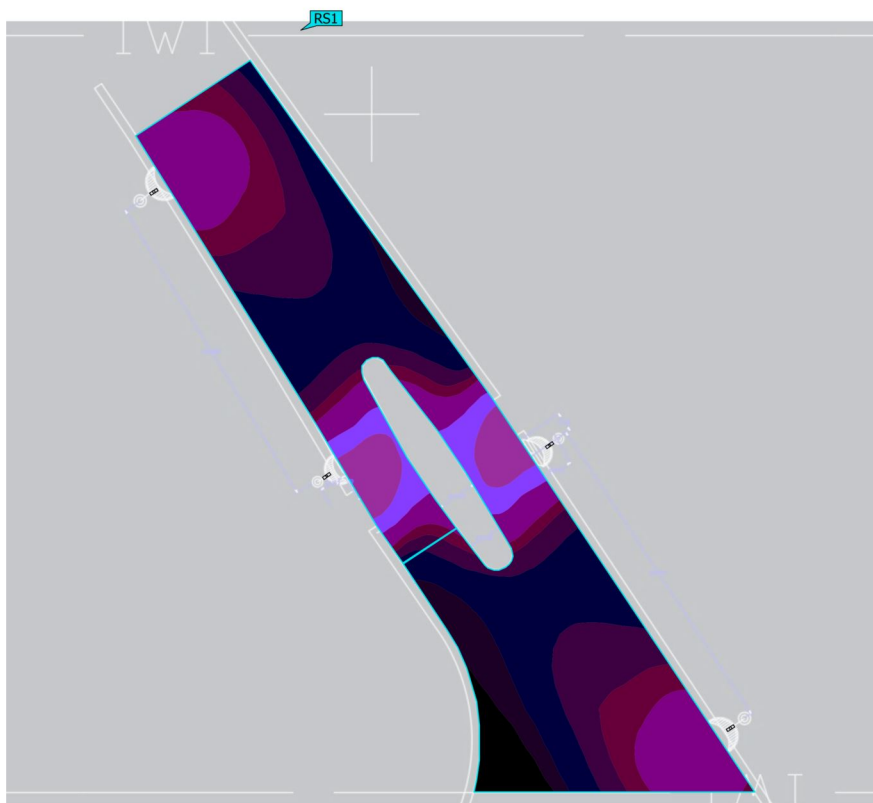
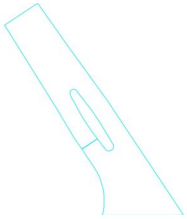
Territoorium 1 (Valgustseen 1)

Tulemusobjekti pinnad 1

| Atribuudid | Ē | E _{min} | E _{max} | U ₀ (g ₁) | g ₂ | Indeks |
|--|---------|------------------|------------------|----------------------------------|----------------|--------|
| Tulemusobjekti pinnad 1 Ristine valgustustihedus (adaptiivne) Kõrgus: -0.000 m | 14.4 lx | 0.65 lx | 79.2 lx | 0.045 | 0.008 | RS1 |

Kasutamispriifil: DIALuxi eelsäte (5.1.4 Standard (liikluspind väljas))

Territoorium 1 (Valgustseen 1)
Tulemusobjekti pinnad 1

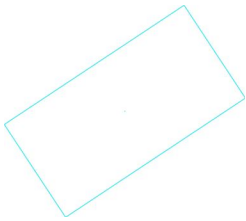


| Atribuudid | Ø | min | max | U ₀ (g ₁) | g ₂ | Indeks |
|--|------------------------|-------------------------|------------------------|----------------------------------|----------------|--------|
| Tulemusobjekti pinnad 1 Heledus Kõrgus: -0.000 m | 0.92 cd/m ² | 0.042 cd/m ² | 5.04 cd/m ² | 0.046 | 0.008 | RS1 |

Kasutamisprofiil: DIALuxi eelsäte (5.1.4 Standard (liikluspind väljas))

Territoorium 1 (Valgustseen 1)

ÜK1 nurgapunktid

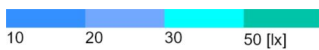
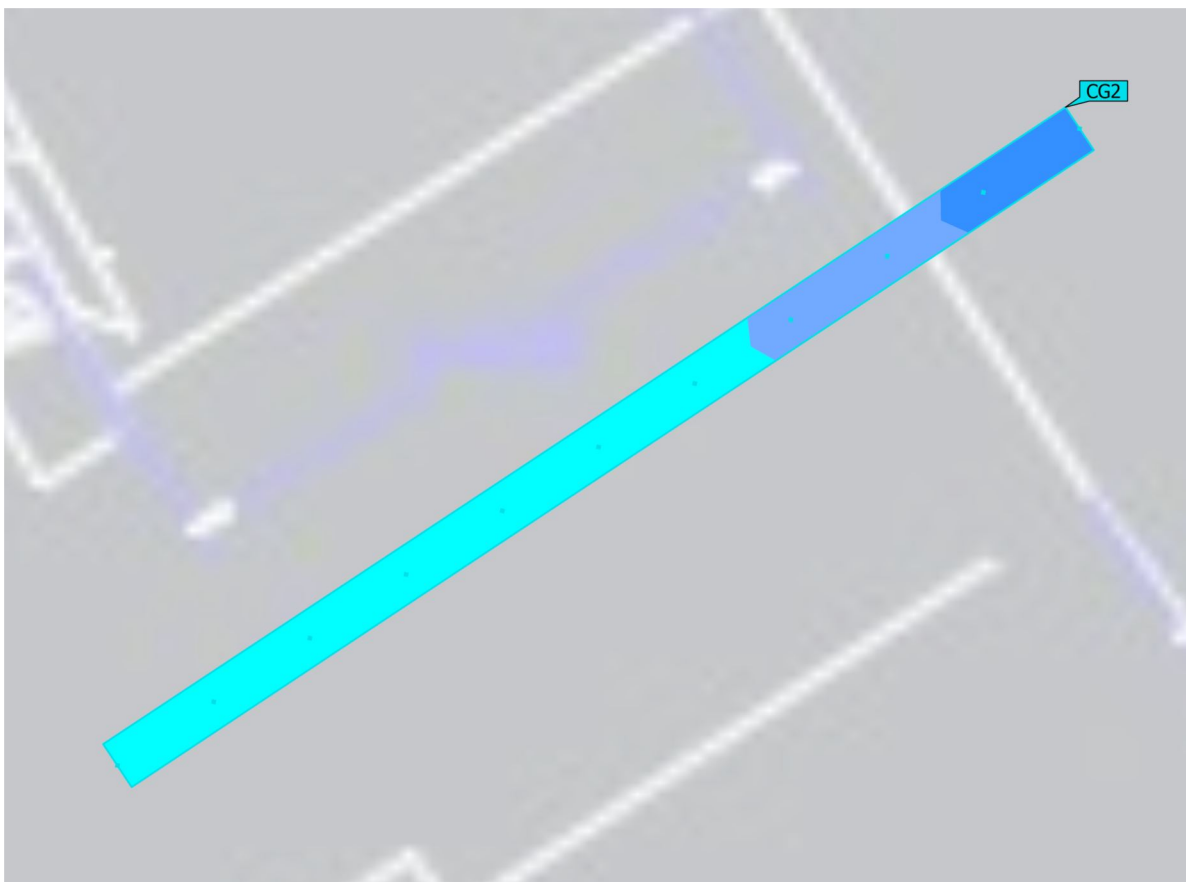
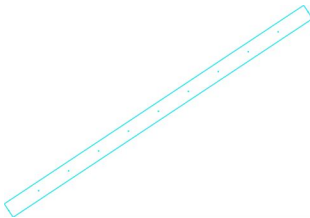


| Atribuudid | Ē | E _{min} | E _{max} | U _o (g ₁) | g ₂ | Indeks |
|---|---------|------------------|------------------|----------------------------------|----------------|--------|
| ÜK1 nurgapunktid Vertikaalne valgustustihedus Pöörlemine: 125.0°, Kõrgus: 1.000 m | 25.3 lx | 7.28 lx | 43.1 lx | 0.29 | 0.17 | CG1 |

Kasutamisprofiil: DIALuxi eelsäte (5.1.4 Standard (liikluspind väljas))

Territoorium 1 (Valgustseen 1)

ÜK1 kesktelg

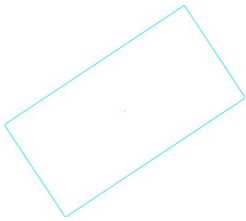


| Atribuudid | Ē | E _{min} | E _{max} | U _o (g ₁) | g ₂ | Indeks |
|---|---------|------------------|------------------|----------------------------------|----------------|--------|
| ÜK1 kesktelg Vertikaalne valgustustihedus Pöörlemine: 125.0°, Kõrgus: 1.000 m | 34.3 lx | 14.0 lx | 47.3 lx | 0.41 | 0.30 | CG2 |

Kasutamisprofiil: DIALuxi eelsäte (5.1.4 Standard (liikluspind väljas))

Territoorium 1 (Valgustseen 1)

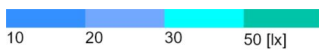
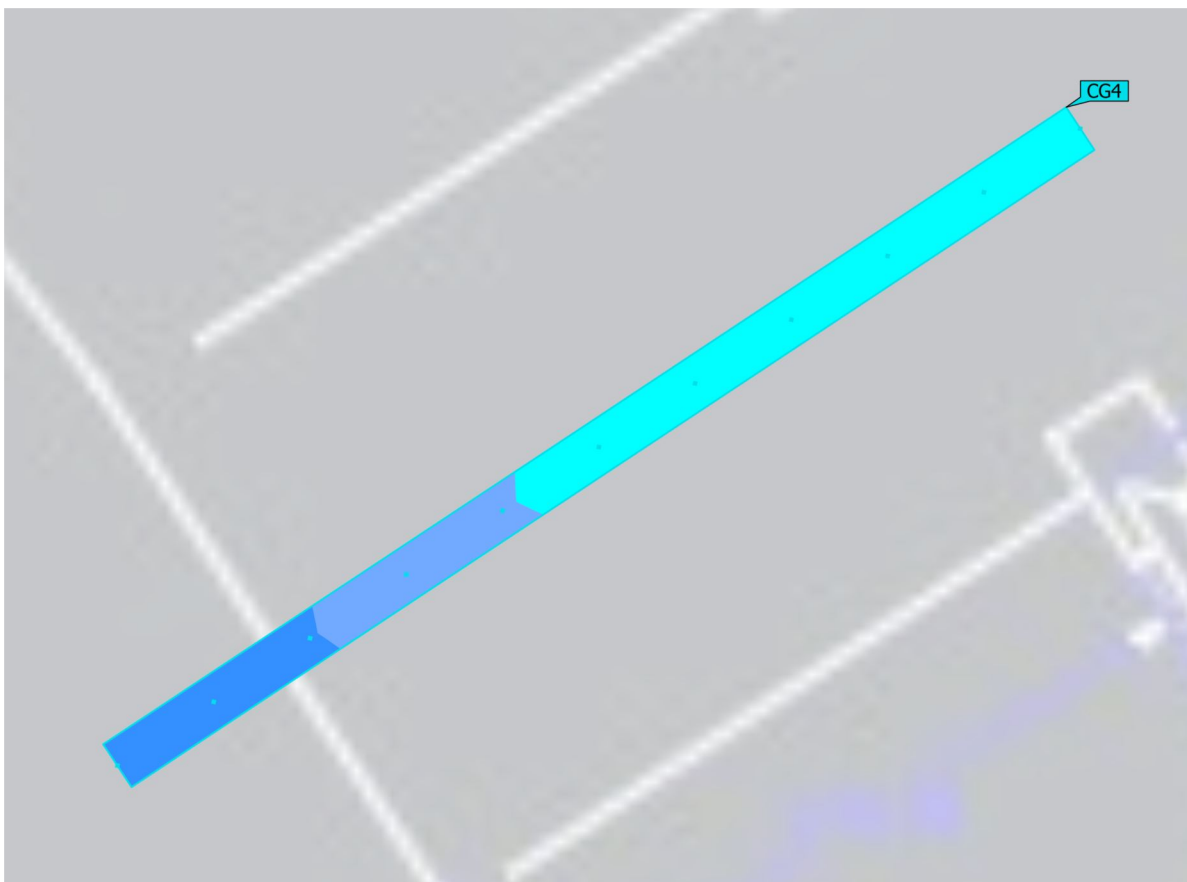
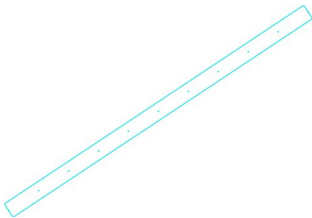
ÜK2 nurgapunktid



| Atribuudid | Ē | E _{min} | E _{max} | U _o (g ₁) | g ₂ | Indeks |
|---|---------|------------------|------------------|----------------------------------|----------------|--------|
| ÜK2 nurgapunktid Vertikaalne valgustustihedus Pöörlemine: -55.0°, Kõrgus: 1.000 m | 24.1 lx | 6.74 lx | 45.5 lx | 0.28 | 0.15 | CG3 |

Kasutamispriifil: DIALuxi eelsäte (5.1.4 Standard (liikluspind väljas))

Territoorium 1 (Valgustseen 1)
ÜK2 kesktelg



| Atribuudid | Ē | E _{min} | E _{max} | U _o (g ₁) | g ₂ | Indeks |
|---|---------|------------------|------------------|----------------------------------|----------------|--------|
| ÜK2 kesktelg Vertikaalne valgustustihedus Pöörlemine: -55.0°, Kõrgus: 1.000 m | 32.2 lx | 11.3 lx | 47.0 lx | 0.35 | 0.24 | CG4 |

Kasutamisprofiil: DIALuxi eelsäte (5.1.4 Standard (liikluspind väljas))